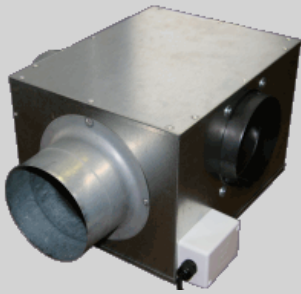


Quartz Series: Multi Inlet Centrifugal Fan
Model: QUMI015-201-02



Common Applications

With the option of one, two or three inlets, the Quartz Series Multi Inlet fans are suitable for a broad range of domestic and commercial applications. One inlet spigot is supplied as standard, additional spigots are available as options. Electrical Available in 240V single-phase only. Motors are four-speed as standard and are speed controllable.

Materials

High efficiency forward curved aluminium impeller with external rotor motor.
Galvanised steel fan casing and spigots.
Casing acoustically treated for extremely low break-out noise.

Protection

IP20 external rotor motor with integral thermal protection.

Warning

Warranty may be void if wiring and installation guidelines are not followed.

Refer to wiring diagram WD1-06 available at www.aerovent.com.au/downloads
Performance Standard ANSI / AMCA 210-99

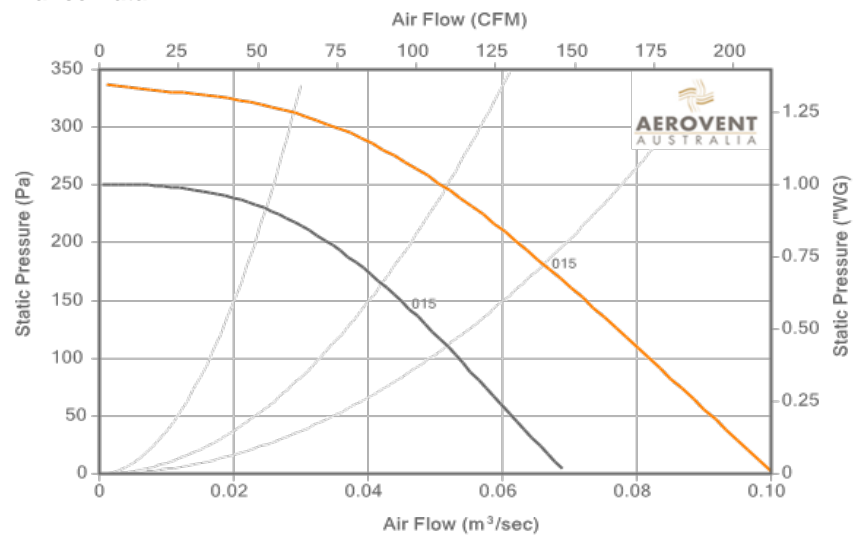
Aerovent Australia Pty. Ltd.

Head Office - Victoria
31 Hosie Street
Bayswater, Victoria 3153
Phone: +61 (0)3 9720 8088
Fax: +61 (0)3 9720 7133
Email: sales@aerovent.com.au

Project:

Fan Ref:

Performance Data



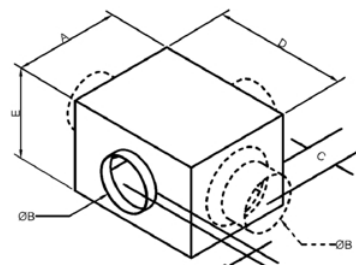
Model Specifications

Power, kW	Current, Amps	Speed, RPM	Power Supply	dB(A) @ 3m	Mass, kg
0.1	0.5	1415	240V / 1Ph / 50Hz	35	5.2

Sound Power Level (dB re10-12 W) at Octave Band Mid-Frequency (Hz)

63	125	250	500	1k	2k	4k	8k
-	-	-	-	-	-	-	-

Dimensions, mm



* One spigot supplied loose for fitting in required installation position. Additional spigots can be supplied as optional extra

A	B	C
300	150	100
D	E	F
380	255	-
G	H	I
-	-	-