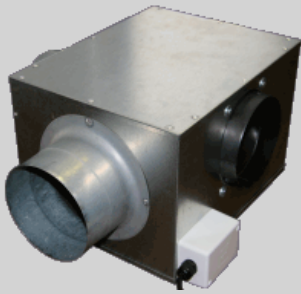


**Quartz Series: Multi Inlet Centrifugal Fan**  
**Model: QUMI015-201-03**



**Common Applications**

With the option of one, two or three inlets, the Quartz Series Multi Inlet fans are suitable for a broad range of domestic and commercial applications. One inlet spigot is supplied as standard, additional spigots are available as options. Electrical Available in 240V single-phase only. Motors are four-speed as standard and are speed controllable.

**Materials**

High efficiency forward curved aluminium impeller with external rotor motor.  
Galvanised steel fan casing and spigots.  
Casing acoustically treated for extremely low break-out noise.

**Protection**

IP20 external rotor motor with integral thermal protection.

**Warning**

Warranty may be void if wiring and installation guidelines are not followed.

Refer to wiring diagram WD1-06 available at [www.aerovent.com.au/downloads](http://www.aerovent.com.au/downloads)  
Performance Standard ANSI / AMCA 210-99

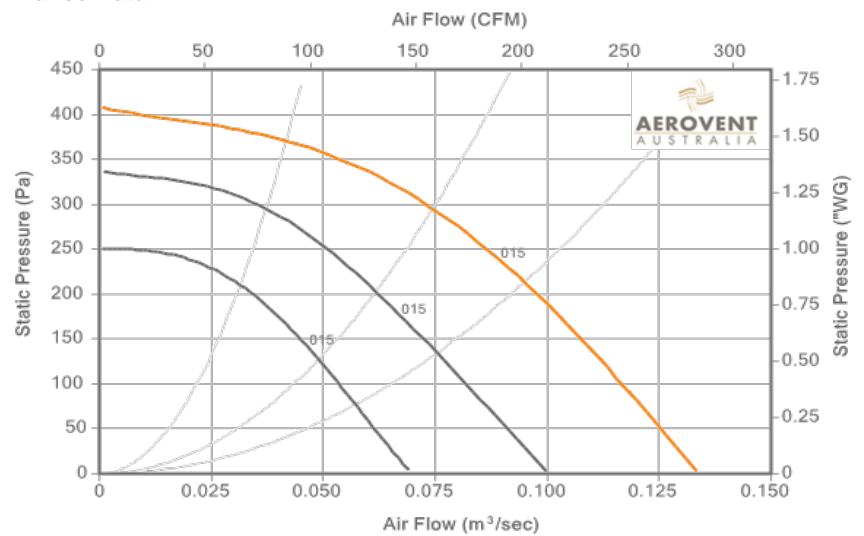
**Aerovent Australia Pty. Ltd.**

**Head Office - Victoria**  
31 Hosie Street  
Bayswater, Victoria 3153  
Phone: +61 (0)3 9720 8088  
Fax: +61 (0)3 9720 7133  
Email: [sales@aerovent.com.au](mailto:sales@aerovent.com.au)

Project:

Fan Ref:

**Performance Data**



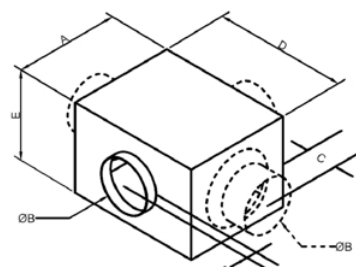
**Model Specifications**

Power, kW	Current, Amps	Speed, RPM	Power Supply	dB(A) @ 3m	Mass, kg
0.112	0.57	1820	240V / 1Ph / 50Hz	42	5.2

**Sound Power Level (dB re10-12 W) at Octave Band Mid-Frequency (Hz)**

63	125	250	500	1k	2k	4k	8k
-	-	-	-	-	-	-	-

**Dimensions, mm**



\* One spigot supplied loose for fitting in required installation position. Additional spigots can be supplied as optional extra

A	B	C
300	150	100
D	E	F
380	255	-
G	H	I
-	-	-

Due to Aerovent Australia's constant product improvement and development program, product details may change without prior notice. Copyright © 2019 Aerovent Australia. All rights reserved.